

Eastfield Road

Slough • • SL1 7EL
PCM: £1,800 PCM



coopers
est 1986

Eastfield Road

Slough • • SL1 7EL

A well presented second floor two bedroom maisonette offered unfurnished and conveniently located within walking distance of Taplow Elizabeth Line station. Additional benefits include a private garden, off street parking, and an electric car charger. A garden office is also available for an additional cost.

First Floor Maisonette

Recently refurbished throughout

Large Rooms

Walking distance to Taplow Elizabeth Line

South Facing Garden

Local amenities nearby

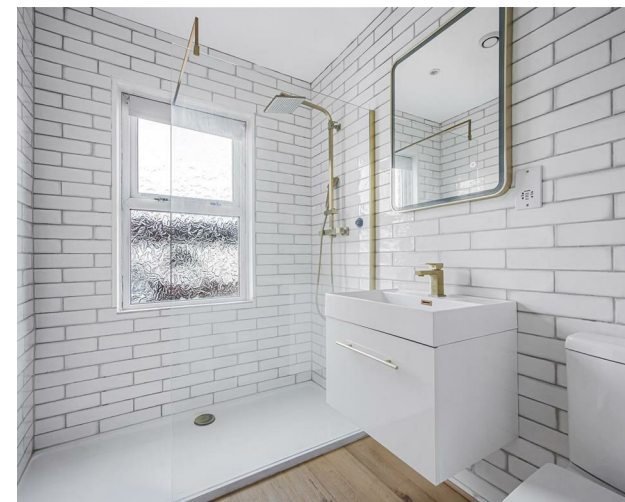
Off street parking & Electric Car Charger

Electric Induction Hob

Unfurnished

Available now!

These particulars are intended as a guide and must not be relied upon as statements of fact. Your attention is drawn to the Important Notice on the last page.

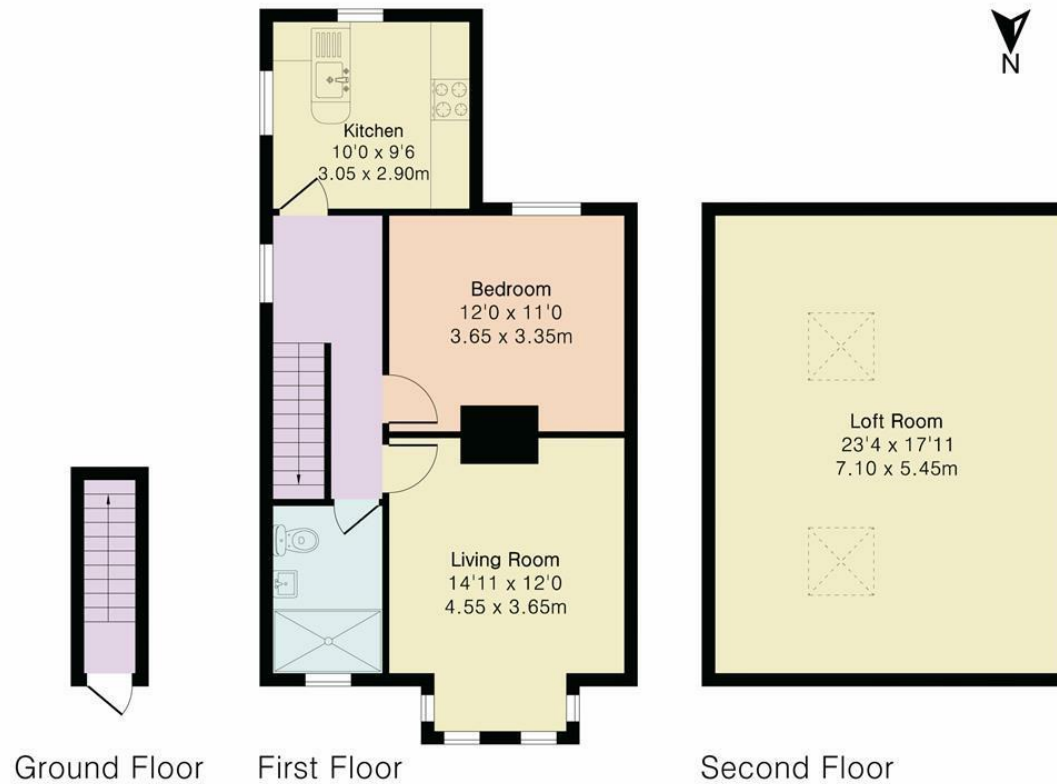




Eastfield Road, Burnham, Slough, SL1

Approximate Area = 951 sq ft / 88.3 sq m

For Identification only - Not to scale



Floor plan produced in accordance with RICS Property Measurement 2nd Edition. Although Pink Plan Ltd ensures the highest level of accuracy, measurements of doors, windows and rooms are approximate and no responsibility is taken for error, omission or misstatement. These plans are for representation purposes only and no guarantee is given on the total square footage of the property within this plan. The figure icon is for initial guidance only and should not be relied on as a basis of valuation.



coopers
est 1986

**42 Queen Street, Maidenhead,
SL6 1HZ**
maidenhead@coopersresidential.co.uk

CoopersResidential.co.uk

Energy Efficiency Rating		
Very energy efficient - lower running costs	Current	Potential
95-100 A		
81-94 B		
69-80 C		
55-68 D		
49-54 E		
41-48 F		
35-40 G		
Below 35 Not energy efficient - higher running costs		
England & Wales 10/2020		

Important Notice: These particulars, whilst believed to be accurate are set out as a general outline only for guidance and do not constitute any part of an offer or contract. Intending purchasers should not rely on them as statements or representation of fact, but must satisfy themselves by inspection or otherwise has the authority to make or give any representation or warranty in respect of the property.